

**Private Use Only ( 개인용도로만 사용해 주세요)**

설교제목 (SERMON TITLE):  
**성경이 말한다 I- 역사**  
**(THE BIBLE SPEAKS I-HISTORY)**

**June 2, 2024**  
**이상민 목사 (Pastor Sangmin Lee)**



## **Genesis 1:9–13**

**9 And God said, “Let the water under the sky be gathered to one place, and let dry ground appear.” And it was so. 10 God called the dry ground “land,” and the gathered waters he called “seas.” And God saw that it was good. 11 Then God said, “Let the land produce vegetation: seed-bearing plants and trees on the land that bear fruit with seed in it, according to their various kinds.” And it was so.**

# **Genesis 1:9–13**

**12 The land produced vegetation: plants bearing seed according to their kinds and trees bearing fruit with seed in it according to their kinds. And God saw that it was good. 13 And there was evening, and there was morning—the third day.**

## 창세기 (Genesis) 1:9-13

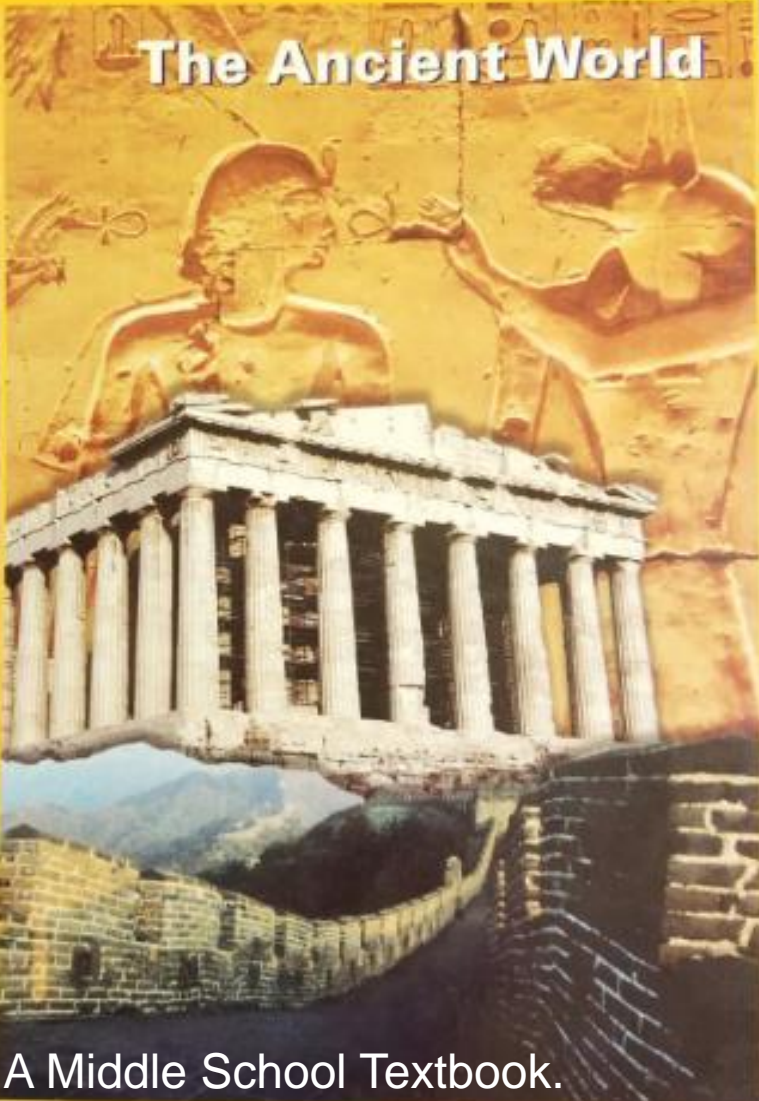
9 하나님이 이르시되 천하의 물이 한 곳으로 모이고  
물이 드러나라 하시니 그대로 되니라 10 하나님이  
물을 땅이라 부르시고 모인 물을 바다라 부르시니  
하나님이 보시기에 좋았더라 11 하나님이 이르시되  
땅은 풀과 씨 맺는 채소와 각기 종류대로 씨 가진 열매  
맺는 나무를 내라 하시니 그대로 되어 12 땅이 풀과  
각기 종류대로 씨 맺는 채소와 각기 종류대로 씨 가진  
열매 맺는 나무를 내니 하나님이 보시기에 좋았더라  
13 저녁이 되고 아침이 되니 이는 셋째 날이니라

# Our History Book...

## CHAPTER 2

### History Alive!

#### The Ancient World



TCI

Brings Learning Alive!

A Middle School Textbook.

Humans living 2 million years ago shaped stone and animal bones into simple tools.

## Early Hominids

### 2.1 Introduction

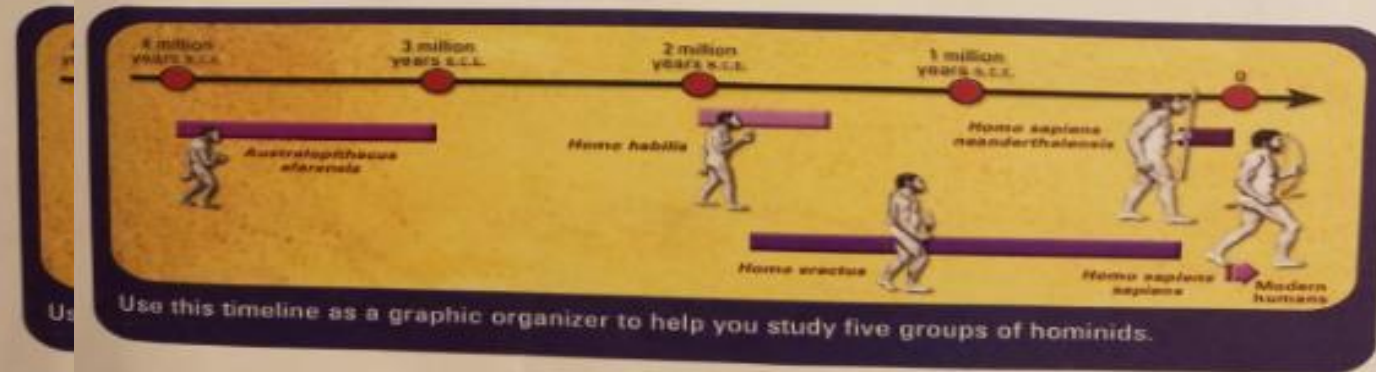
In Chapter 1, you explored cave paintings made by prehistoric humans. Scientists call these prehistoric humans **hominids**. In this chapter, you will learn about five important groups of hominids.

You've already met three kinds of "history detectives"—archeologists, historians, and geographers. The study of hominids involves a fourth type, paleoanthropologists. Anthropologists study human development and culture. Paleoanthropologists specialize in studying the earliest hominids. (*Paleo* means "ancient.")

In 1974, an American paleoanthropologist, Donald Johanson, made an exciting discovery. He was searching for artifacts under a hot African sun when he found a partial skeleton. The bones included a piece of skull, a jawbone, a rib, and leg bones.

After careful study, Johanson decided the bones came from a female hominid who lived more than 3 million years ago. He nicknamed her "Lucy" while he was listening to the song "Lucy in the Sky with Diamonds," by the Beatles. She is one of the earliest hominids ever discovered.

What have scientists found out about Lucy and other hominids? How were these hominids like us? How were they different? What **capabilities**, or skills, did each group have? Let's find out.





# The Bible Speaks...

CHART 1: THE ARCHAEOLOGICAL PERIODS OF THE NEAR EAST  
WITH SPECIAL REFERENCE TO PALESTINE\*

Term	Approximate Dates
Paleolithic (Old Stone Age)	?–18,000 B.C.
Epipaleolithic (formerly Mesolithic—Middle Stone Age)	18,000–8300 B.C.
Neolithic (New Stone Age)	8300–4500 B.C.
Chalcolithic (Copper Stone Age)	4500–3300 B.C.
Early Bronze Age	3300–2000 B.C.
Middle Bronze Age	2000–1550 B.C.
Late Bronze Age	1550–1200 B.C.
Iron Age	1200–586 B.C.
Babylonian and Persian Periods	586–332 B.C.
Hellenistic Period	332–63 B.C.
Roman Period	63 B.C.–A.D. 324
Byzantine Period	A.D. 324–638

years old

5

oh,

at, ...

healtiel, ...

t, .

se,

n,

...

l, .

5000

1000

6000

2000



usade

Current

**“Tubal-Cain, who  
forged all kinds of  
tools out of bronze  
and iron”**

**-Gen 4:22-**

# The Difference is...

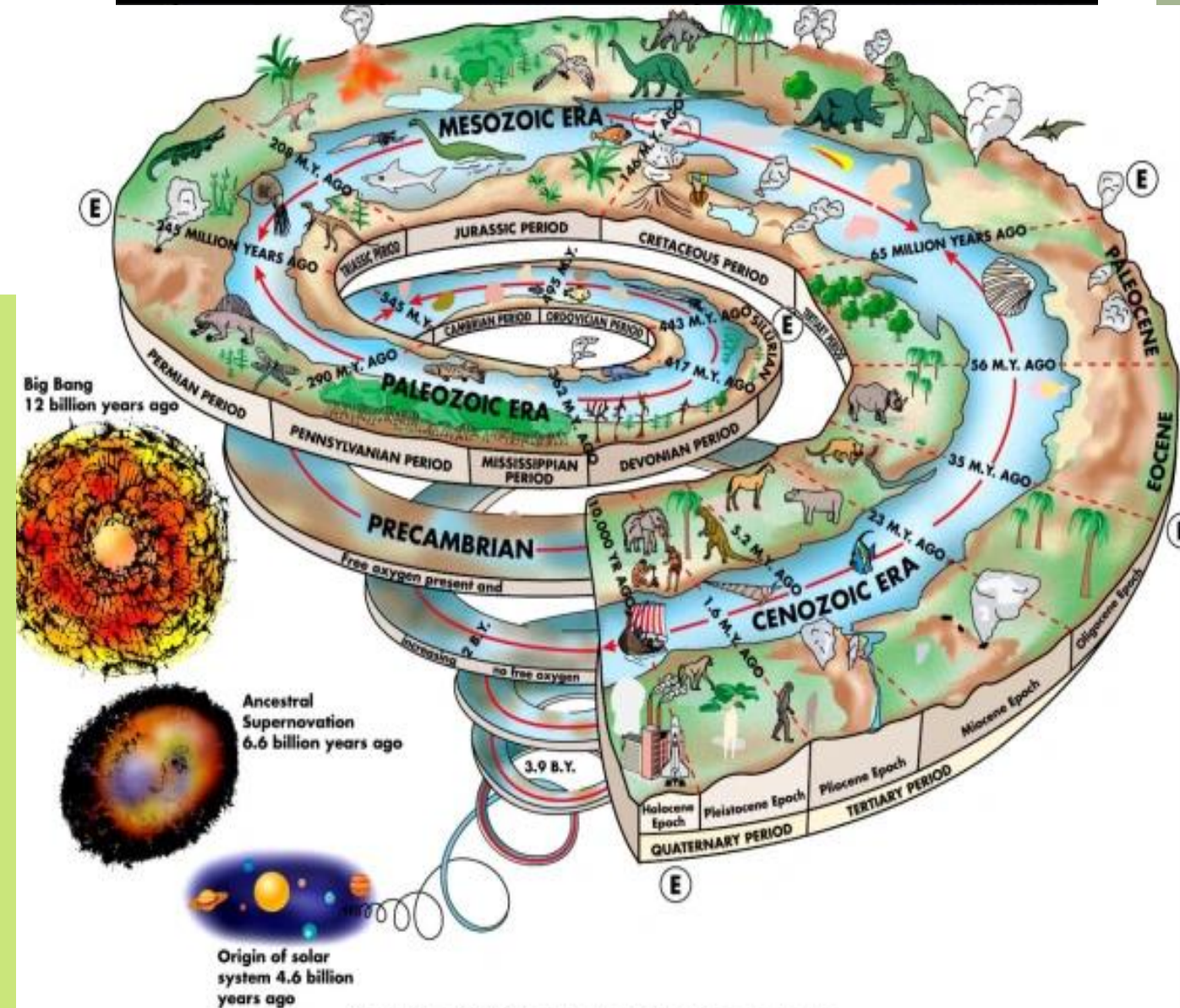
## DAYS OF CREATION IN GENESIS ONE

Job 40:15-18

Behold now behemoth, which I  
made with thee; he eateth grass as  
an ox. . . .

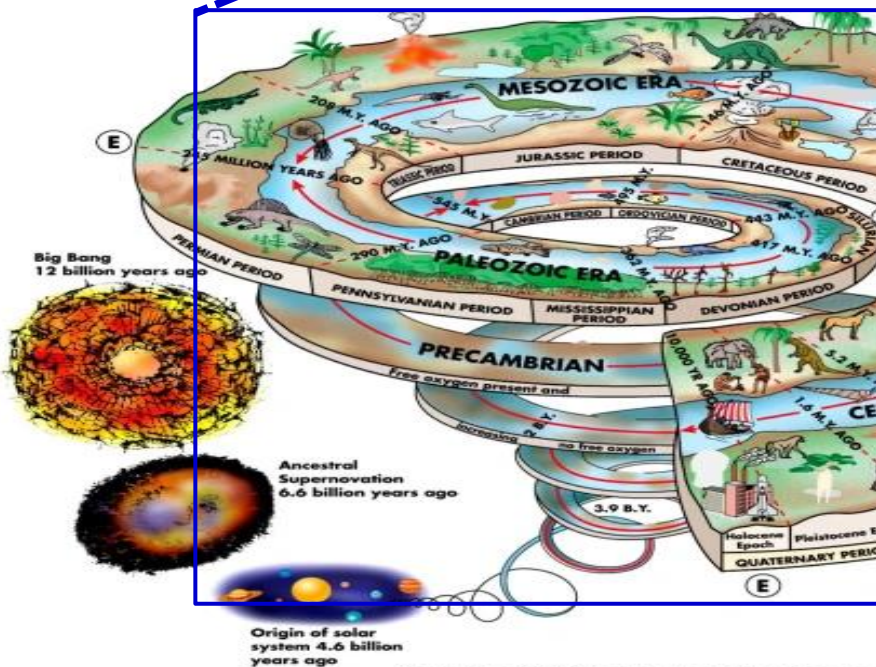
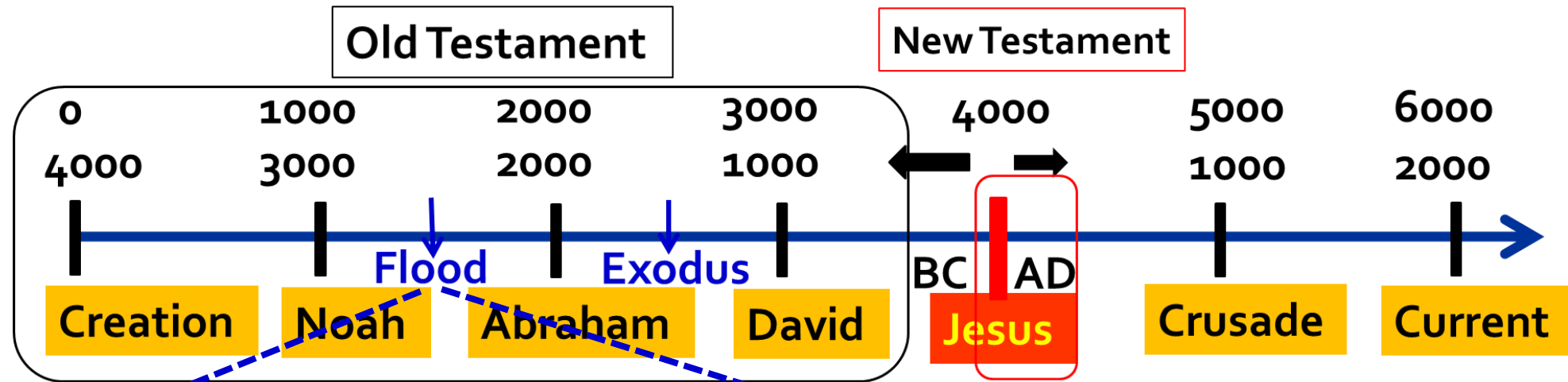
He moveth his tail like a cedar . . .

His bones are as strong pieces of  
brass; his bones are like bars of iron.  
He is the chief of the ways of God.



Copyright © 2005 Pearson Prentice Hall, Inc.

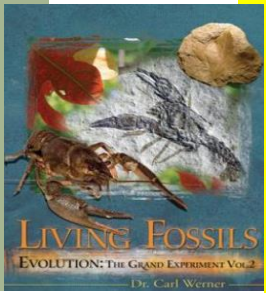
# Timelines: Biblical vs Geological..



**Billions of Years  
vs  
Thousands of Years**



# Living Fossils

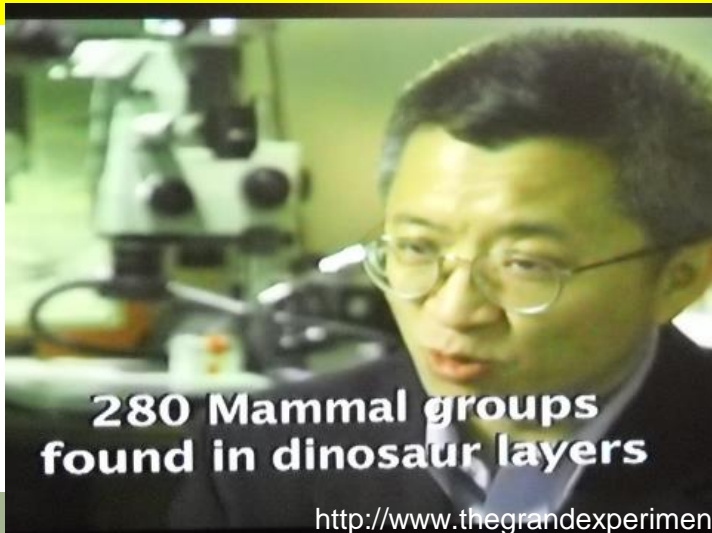


Dr. Carl  
Werner

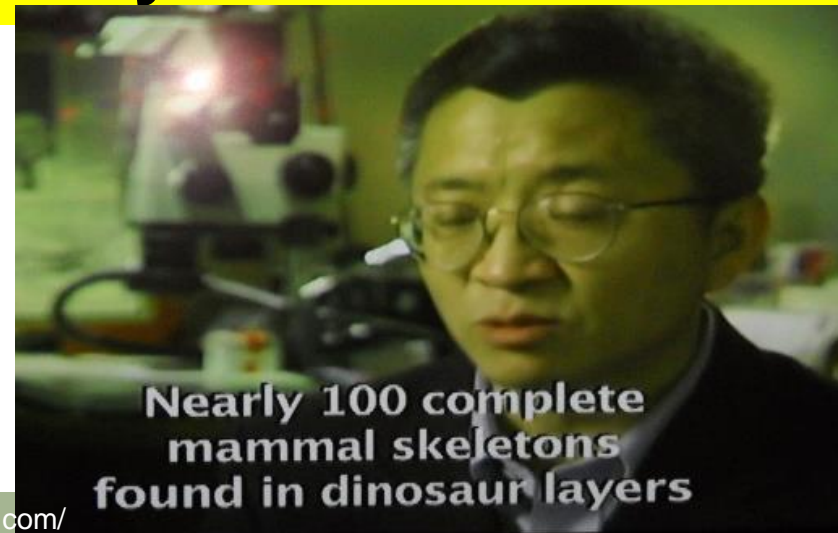
Dr. Carl Werner was challenged by a classmate, saying “I bet you can’t prove evolution.” Disturbed by him,, he (a biology major at the time) ...began his quest for an answer... read ...on evolution, including paleontology, geology, biology... After 18 years of study, .. begin a series of experiments ..to test evolution. For the next 17 years, 1997-2014, ...traveled to the best museums and dig sites around the globe, photographing thousands of original fossils and the actual fossil layers ...”



Dr. Zhe-Xi Luo  
Curator, Carnegie Museum

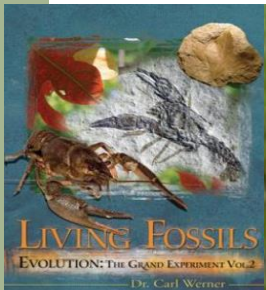


280 Mammal groups  
found in dinosaur layers



Nearly 100 complete  
mammal skeletons  
found in dinosaur layers

# Living Fossils



Dr Carl  
Werner



## Fossils:

- Then:  
Evidence of  
Change
- Now :  
Evidence of  
No Change



# Case for Fast Stratification

**Polystrate  
trees:**

**Evidence of  
rapid  
formation →  
Supports  
Catastrophic  
Genesis  
Flood?**



“30 ft ve  
hundred  
TN”

**Billions ?  
vs  
Thousands ?**

**“For in six days the LORD made  
the heavens and the earth,  
the sea, and all that is in them,  
but he rested on the seventh day.  
Therefore the LORD blessed  
the Sabbath day and made it  
holy” -Exo 20:11-**