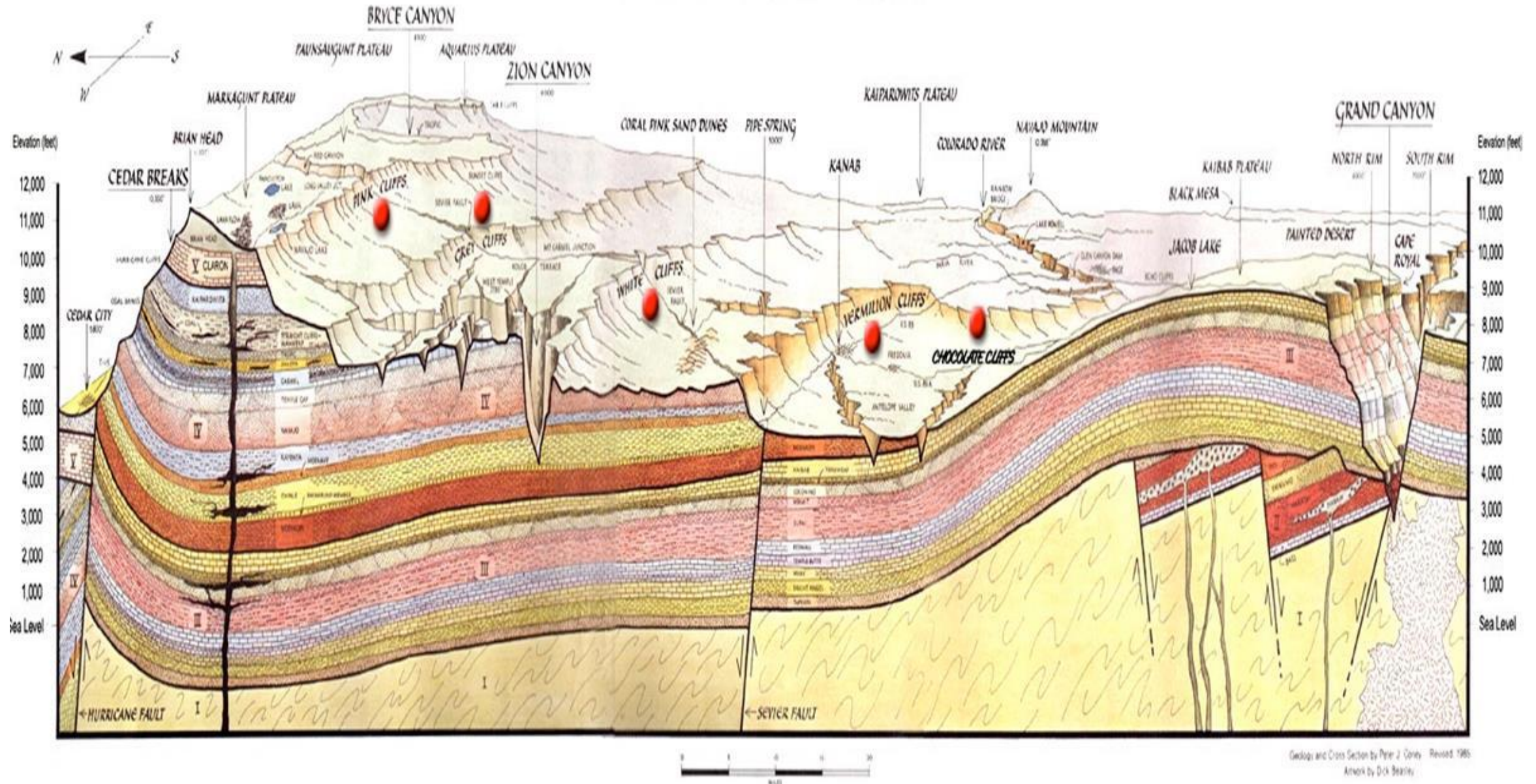


Private Use Only (개인용으로만 사용해 주세요)

특별 프로그램 (SPECIAL PROGRAM):
성경적 창조론 6. 진화론적 지질학
(BIBLICAL CREATIONISM 6. EVOLUTIONARY GEOLOGY)

April 27, 2025
이상민 목사 (Pastor Sangmin Lee)

The Grand Staircase



Geology Worldviews

- **Catastrophism**

“Prior to the 19th century, it was largely assumed by geologists that catastrophes such as the Biblical flood were responsible for the majority of the earth’s fossil bearing rock”

- **Uniformitarianism**

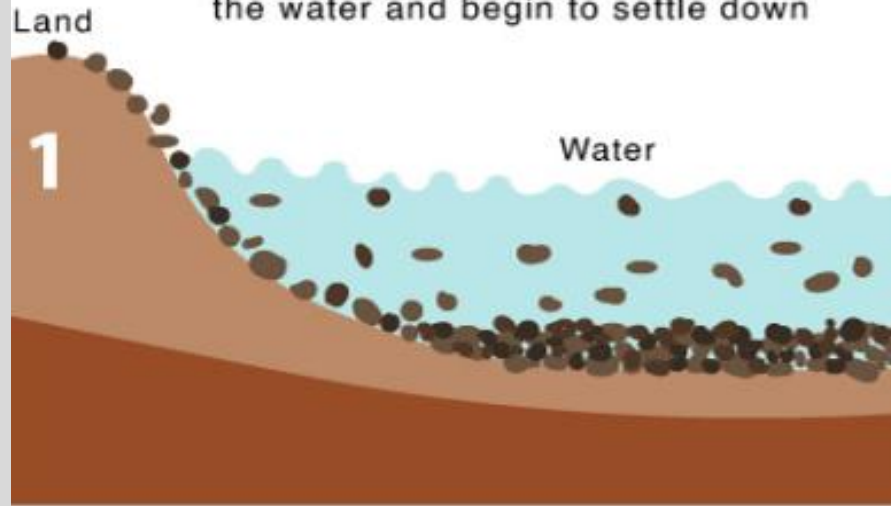
“Around 1850, the non-catastrophic view of earth’s geology began to develop, which suggested that gradual processes and uniform intensities were instead responsible”

Slow and Gradual Process...

“The formation of sedimentary rocks takes place anywhere between thousands of years to millions of years.”

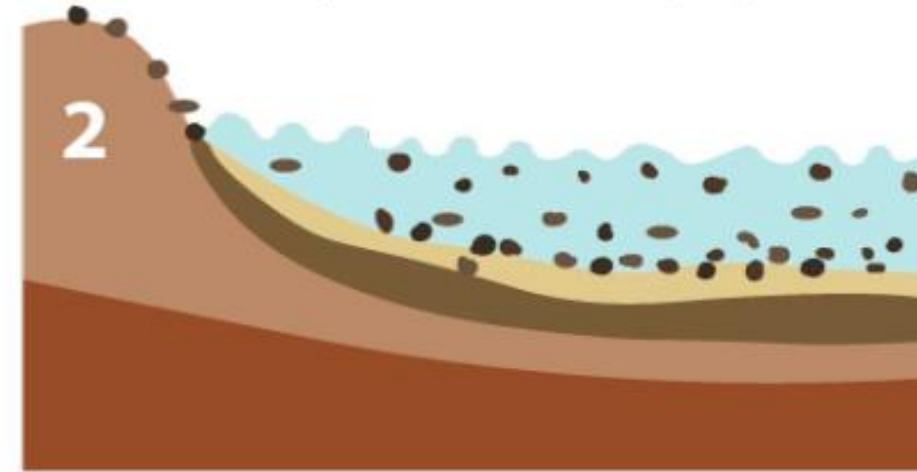
Erosion & Transportation

Eroded sediments end up in the water and begin to settle down



Deposition

With time, more sediments are added to newly formed sedimentary layers



Compaction

The release of moisture from the sedimentary layers makes the layers compact

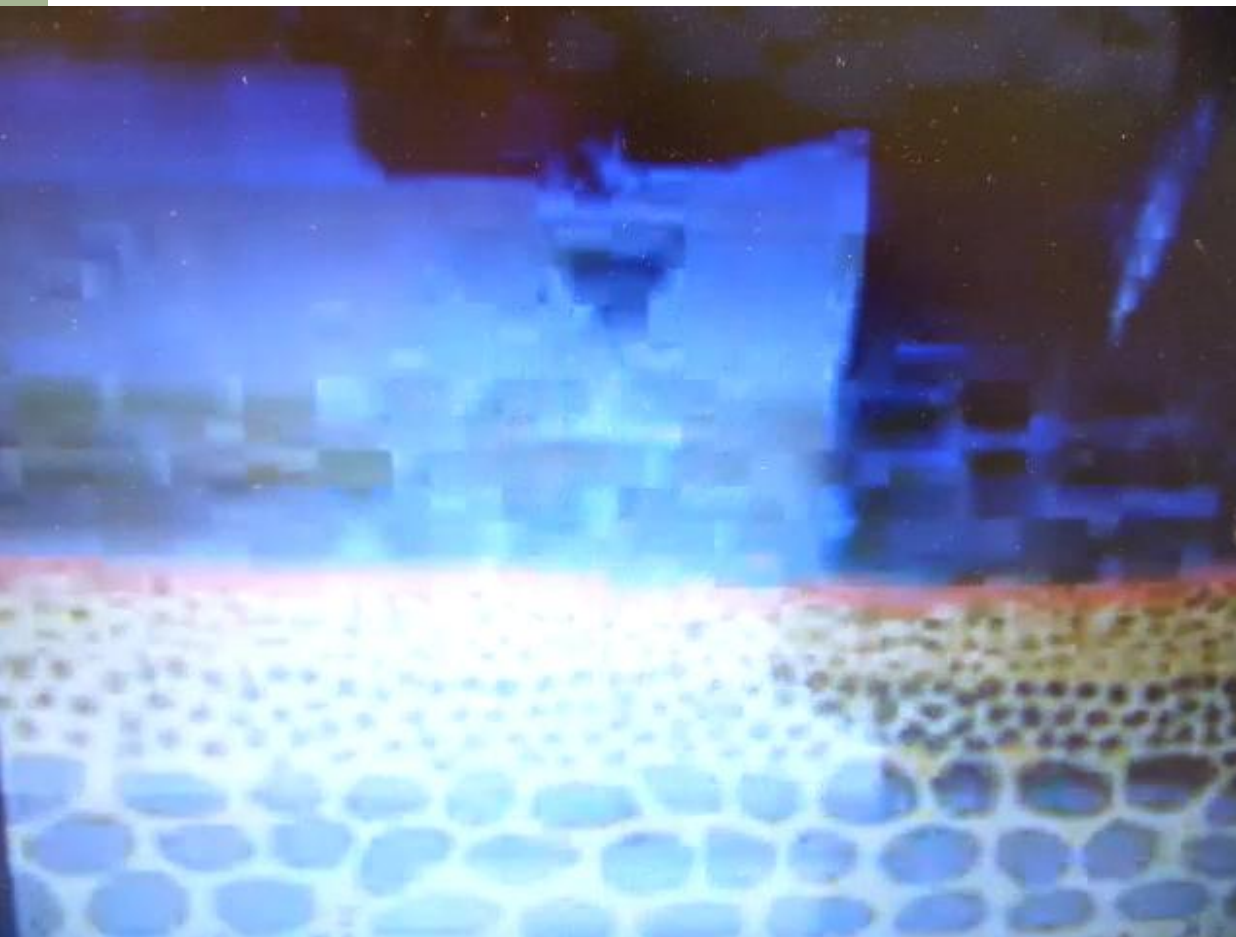


Cementation

Salt crystals glue the layers to form more compact sedimentary rocks



Fast Process?



Folded Strata...

Smooth curvature: Evidence of fast stratification and bending → Supports Catastrophic...



Andrew A. Snelling-www.answersingenesis.org/articles/am/v4/n2/folded-not-fracture



www.neatorama.com/2007/07/15/the-wave-in-coyote-buttles-vermillion-cliffs-national-monument/

Strata Folds in Western Iran



British Columbia, Canada

Fast Stratification...

**Polystrate
trees:**

**Evidence of
rapid
formation →
Supports
Catastrophic
Genesis
Flood?**

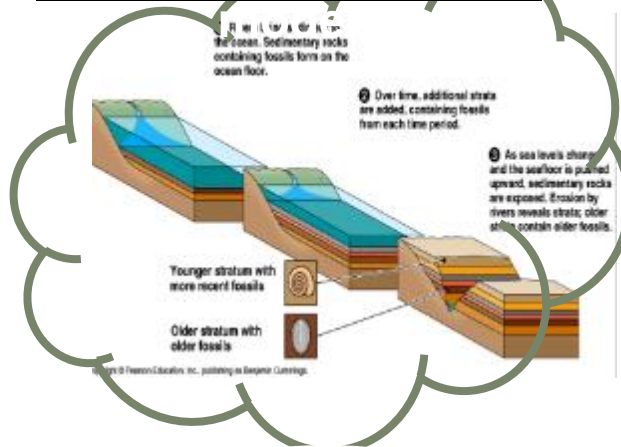


“30 ft ve
hundred
TN”

**Billions ?
vs
Thousands ?**

Two views on Strata

Uniformitarian



Catastrophic Model



Time line

Past

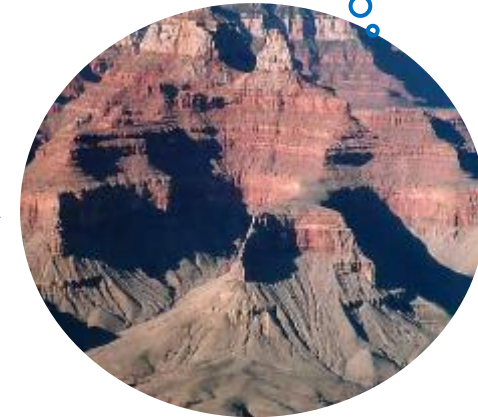
Present

There were **Strata** when we found the canyon.

Path ?

Origin ?

Rate ?



Observation Limit

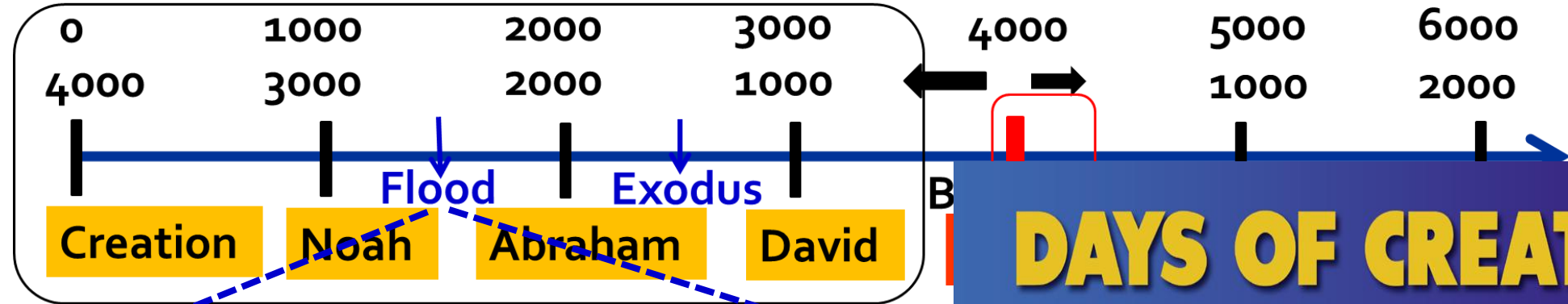
Origins Science
→ Beyond Observation
→ No Proof!
→ Issue of Interpretation!!

Experimental Science
→ Measurable!!
No Assumption!!

Two Views on Timeline

Old Testament

New Testament



DAYS OF CREATION IN GENESIS ONE

DAY 1
EARTH, SPACE, TIME & LIGHT

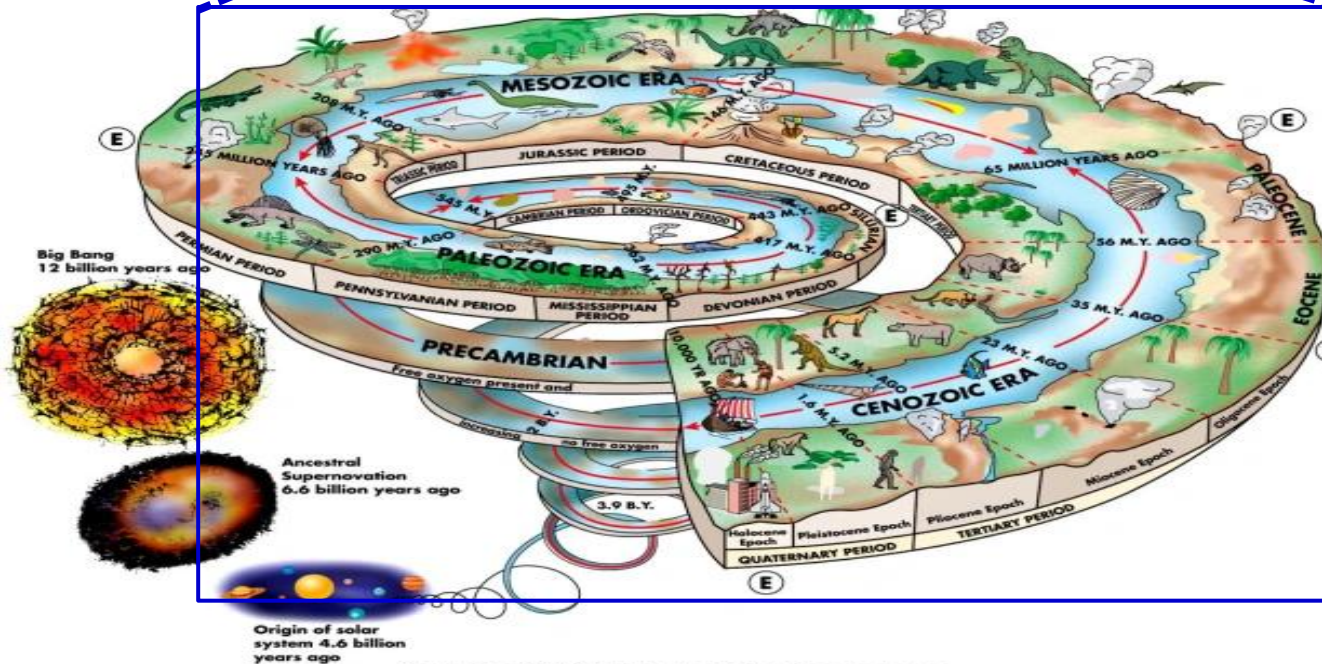
DAY 2
ATMOSPHERE

DAY 3
DRY LAND & PLANTS

DAY 4
SUN, MOON & STARS

DAY 5
SEA & FLYING CREATURES

DAY 6
LAND ANIMALS & MAN



Copyright © 2005 Pearson Prentice Hall, Inc.

Experimental v.s Origins Science

Origins Science

They were ... when we found them...

When did they..?
How long time..?
How many..?
.....



???

Not observable !!
So we don't know
the answer!

Experimental Science

How fast..?
How tall..?
Pace..?
.....

Observable !!
So, we know
the answer!!
Because we can
measure..

Two Views on Strata

Origins Science

Experimental Science

Path?

There were **Strata** when we found the canyon..

Origin?

Time line

Past | Present



Scope of Past → Beyond
Observation → No Answer
→ depends on Assumption

Observation
Limit

Biblical View

vs

Secular View

Genesis Records
Catastrophic..
6000 years..

Men's idea..
Uniformitarian..
Millions of years..

Scope of Present →
Observable!! →
No Controversy!!

Not the Issue of Science, but of Men's Interpretation or Worldview!

Two Faith...

**Young Earth Creationism:
Bible says...and... believe..**

**“In the Beginning, God...
vs
In the Beginning, Dirt..”**
- Kent Hovind -

**Evolutionism (& Old Earth):
Men assume...and... believe..**

**Time Limit
of Observation**

Past | Present

Origins??



Paleontology



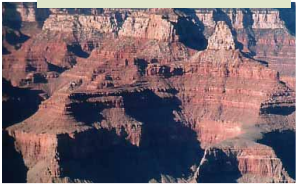
Anthropology



Biology



Geology

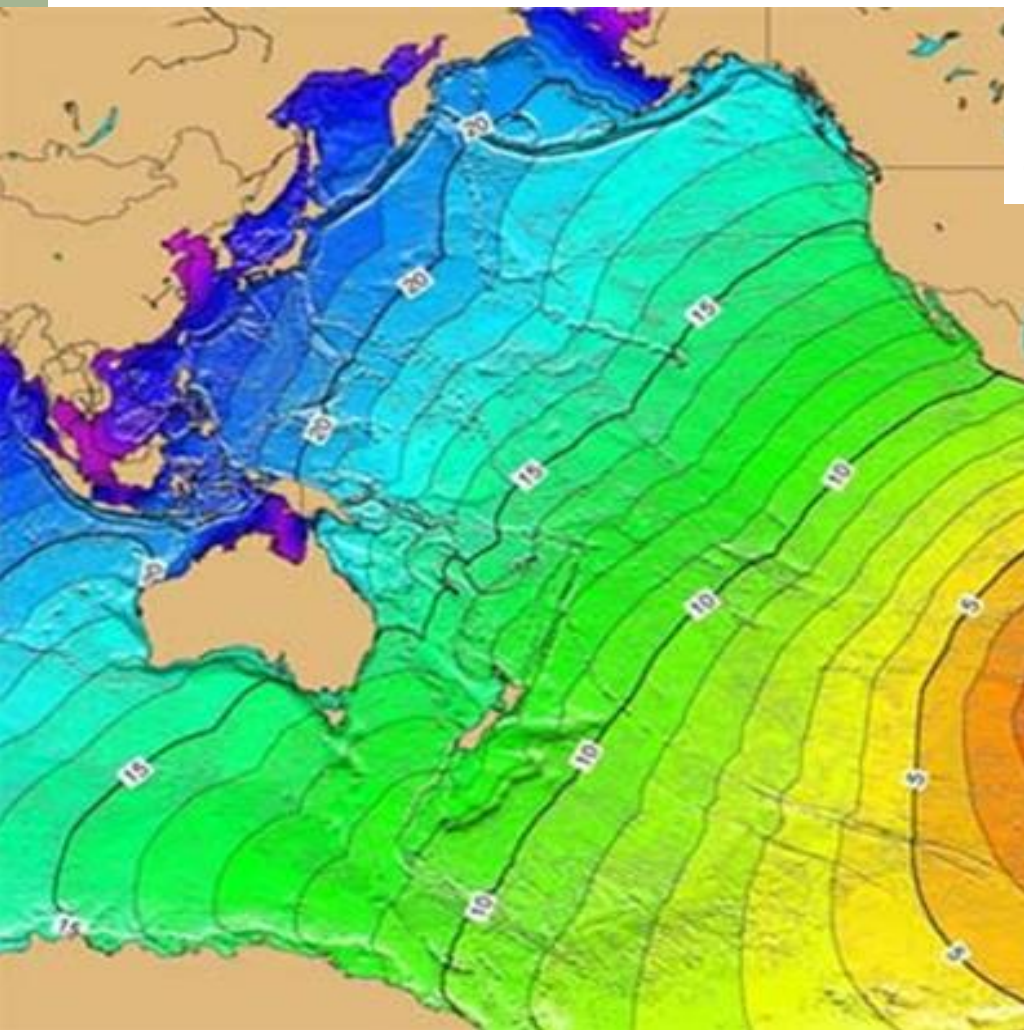


Astronomy

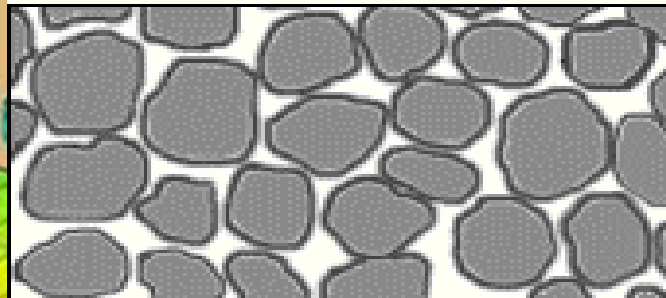


**Chemistry...
History...
Archaeology...
Radiometric
Dating...**

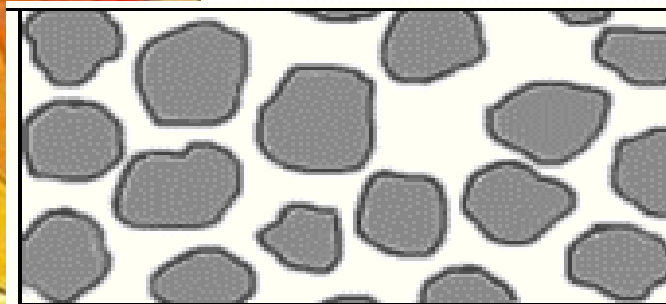
Potential Impact of Disaster...



“Liquefaction” is “... observed in quicksand... turbidity currents, and as a result of earthquake shock. -creationwiki.org-

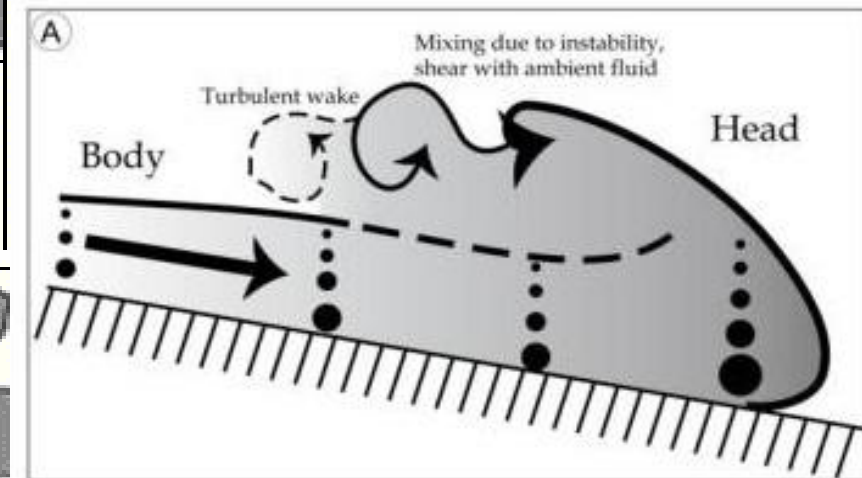


Normally, water fills the spaces between sediment grains, but the grains touch, and friction holds the sediment together.



Liquefaction increases the water-filled spaces between grains, allowing the sediment to flow like a liquid.

“Turbidity currents” are rapid, underwater avalanches or landslides of sand or mud. -creationwiki.org-



offtheshelfedge.wordpress.com/2012/11/07/the-bouma-sequence-and-turbidite-deposits/

How Can All Get on the Ark?

Overall size: 140m x 23m x 14 m = 522 train container

240 sheep/container x 522 = 125,280 sheep/ total volume,

“Two of every kind of bird, ...animal ...creature that moves along the ground” (Gen.6:20) → Total species of animals ~ 17600 x (2 pair) ~

35,200 sheep → ~30% of total volume <http://www.creation.or.kr/library/print.asp?no=2542>

